



Asian Academy for Campus Ministry

Nurturing Minds, Empowering Lives: Advancing Mental Health and Mentorship in Campus Communities

30 April – 7 May 2025
Hong Kong Baptist University

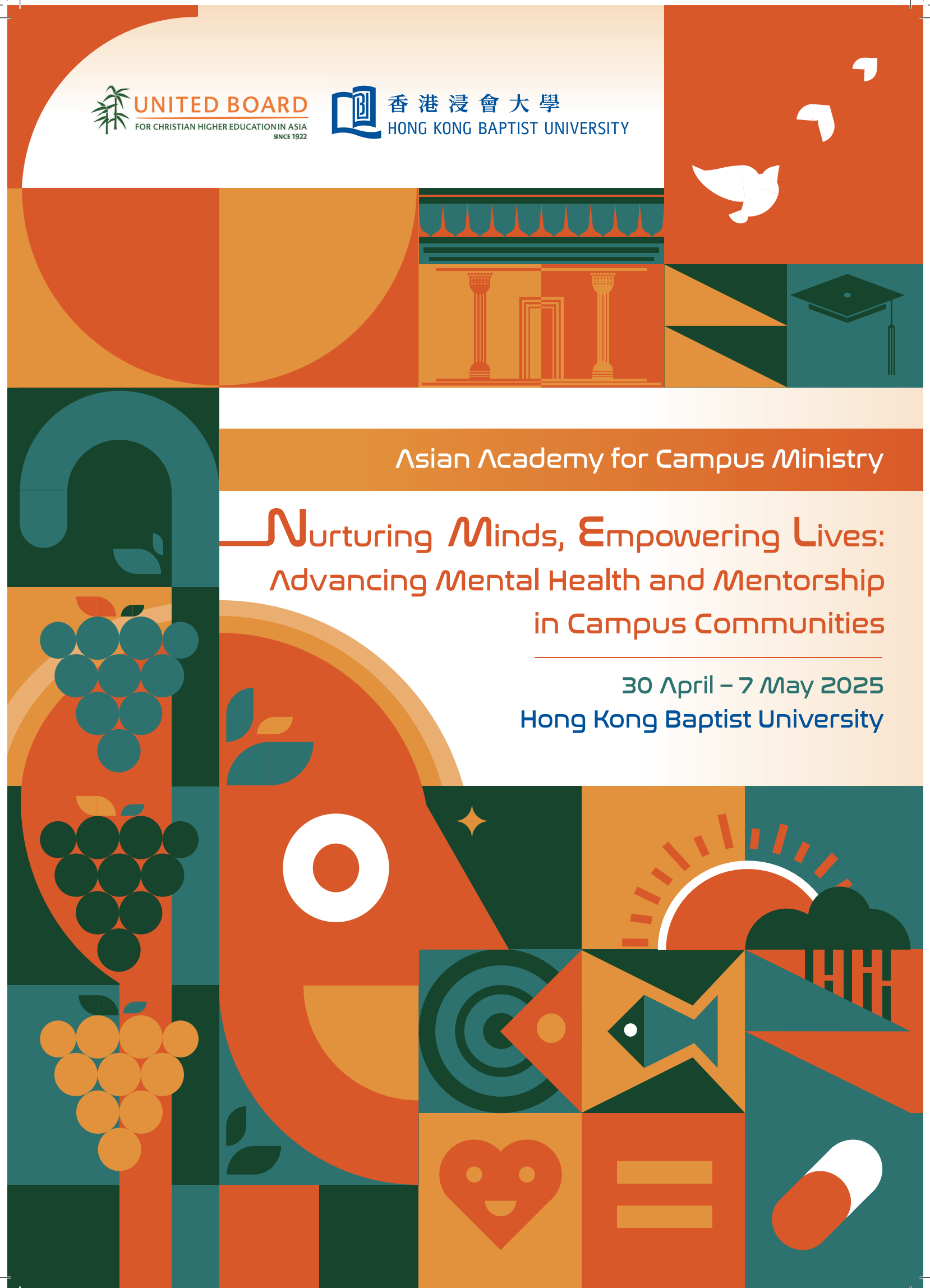






Table of Content

Welcome Message	3
Message from the United Board for Christian Higher Education in Asia.....	3
Message from Hong Kong Baptist University	4
Asian Academy for Campus Ministry.....	5
Programme Overview	5
Programme Schedule	7
Speakers and Guests	11
Participants	19
Host Institution	22
Hong Kong Baptist University.....	22
Chaplain's Office	22
Accommodation and Logistics	24
Additional Information	27
Hong Kong	27
Getting around in Hong Kong	27
Weather	28
Electricity	28
Currency.....	28
Some Useful Tips	29
Sightseeing in Hong Kong.....	29
Emergency Contact	30





Message from the United Board for Christian Higher Education in Asia

On behalf of the United Board for Christian Higher Education in Asia, it is my great pleasure to welcome all participants to the Asian Academy for Campus Ministry (AACM) 2025. This year's program, hosted by Hong Kong Baptist University, centers on the theme "Nurturing Minds, Empowering Lives: Advancing Mental Health and Mentorship in Campus Communities". It is a timely and essential initiative that addresses the increasing challenges universities face in supporting student mental health and well-being.



At the United Board, we are deeply committed to fostering whole-person education, nurturing students intellectually, spiritually, and ethically. The AACM exemplifies this commitment by equipping campus ministers and related personnel with theological insights and practical tools to cultivate a culture of care within their institutions. Through experiential learning, collaborative discussions, and innovative practices, this program empowers participants to become agents of transformation in their communities.

In a rapidly changing and often divided world, the pursuit of spirituality remains crucial in both study and work. This perspective informs the United Board's mission where inclusive Christian values guide our efforts to nurture resilience, compassion, and ethical leadership. Supporting students in their mental, emotional, and spiritual growth is more important than ever, and we recognize that campus leaders, chaplains and support personnel play a pivotal role in this endeavour.

We are honored to host this meaningful program with Hong Kong Baptist University, an institution that shares our dedication to holistic education and community service. Together we aim to build a culture of care, ultimately empowering students to navigate challenges with strength and purpose while fostering interfaith and intercultural understanding. Our collective efforts seek to inspire and equip campus leaders, chaplains, and support personnel to address the pressing needs of their students and institutions, strengthening collaboration across borders.

I encourage each of you to fully engage in this journey of learning, reflection, and action. May this experience deepen your understanding of mental health and mentorship while strengthening your commitment to creating positive change on your campuses.

Thank you for your dedication to advancing a culture of care in higher education. I wish you a meaningful and transformative experience at AACM 2025.

Pareena Gupta Lawrence

President

United Board for Christian Higher Education in Asia

Message from Hong Kong Baptist University

Dear participants of the Asian Academy of Campus Ministries,

It gives me great pleasure to extend a warm welcome to you at the Asian Academy for Campus Ministry (AACM) hosted by Hong Kong Baptist University (HKBU). We treasure this meaningful partnership with the United Board for Christian Higher Education in Asia and the special occasion to network with campus ministers from across Asia.



With our rich heritage of Christian higher education, HKBU is committed to delivering academic excellence in a caring, creative and global culture. We strive to nurture future leaders to be compassionate global citizens. The well-being of our campus community members is always our utmost concern. The Chaplain's Office and campus ministries play a vital role in cultivating a caring campus that aligns with biblical values. We encourage our members not only to love ourselves but also to extend care to our neighbours.

Today, we witness rapid development in Artificial Intelligence and the growing challenges related to student well-being and mental health. Our next generation faces a drastically changing future. It is our priority to foster an environment of holistic care for our youth. Campus ministers share the responsibility of nurturing the resilience of our community and embodying the Christian's presence for those in need. I sincerely hope that through insightful sharing by professionals, creative experiential learning opportunities and meaningful conversations, you will be inspired and enriched to develop holistic campus ministries in your own context.

May you also enjoy fruitful friendship with peers who walk in similar journeys in other corners of the world. Together, let's be the salt and light on our campus.

Warm Regards,

Prof. Alex Wai

*President and Vice-Chancellor
Hong Kong Baptist University*





Programme Overview

In recent years, universities have faced increasing challenges related to student mental health and well-being. Academic pressures, social expectations, and personal struggles have led to heightened stress, anxiety, and even suicide attempts on campuses. As integral members of university ecosystems, campus ministers have the opportunity to address these critical issues by fostering environments that prioritize mental health, spirituality, and holistic care.

The Asian Academy for Campus Ministry (AACM), under the theme “Building a Culture of Care,” provides a platform for campus ministers to gain theological insights and practical tools necessary to address these challenges effectively. The program for 2025 with the theme “**Nurturing Minds, Empowering Lives: Advancing Mental Health and Mentorship in Campus Communities**”, hosted by Hong Kong Baptist University, builds on the success of the previous year and aims to deepen the focus on mental health and mentoring skills through a combination of experiential learning, collaborative discussions, and exposure to innovative practices.

By hosting this program in Hong Kong—a dynamic cultural hub with a rich history of multifaith and spiritual practices—the AACM seeks to provide participants with a unique opportunity to explore diverse approaches to campus ministry and holistic care.

Objectives

- ♦ **Enhance Understanding of Spirituality and Mental Health:** Equip participants with theological perspectives and practical insights on addressing student spirituality and mental health challenges, enabling them to foster resilience and well-being on their campuses.
- ♦ **Foster Collaboration and Networking:** Create opportunities for campus ministers across Asia to share best practices, challenges, and case studies, facilitating innovative approaches to student support and ministry in a multifaith context.
- ♦ **Promote Personal and Community Growth:** Provide experiential learning opportunities, including guided spiritual practices, drama therapy, and peacebuilding exercises, to help participants build inner peace, interpersonal relationships, and a sense of community.
- ♦ **Empower Mentoring and Leadership Development:** Focus on mentoring young adults, equipping campus ministers with tools and methods to support students’ transitions and personal growth, while also encouraging the development of action plans for their home institutions.

Outcomes

- ▶ **Enhanced Capacity for Mental Health Support:** Participants will gain practical skills and strategies to address student mental health issues, fostering a culture of care and well-being within their institutions.
- ▶ **Improved Multifaith and Multicultural Competence:** Exposure to diverse spiritual practices and chaplaincy models will enable participants to develop inclusive approaches to campus ministry that cater to students from different faith traditions and backgrounds.
- ▶ **Strengthened Peer Networks:** Participants will build strong relationships with other campus ministers, creating a network of support and collaboration for addressing shared challenges across Asian campuses.
- ▶ **Action-Oriented Plans for Institutional Change:** By the end of the program, participants will develop tailored action plans to implement mental health and mentoring initiatives in their home institutions, ensuring sustainable and impactful outcomes.
- ▶ **Increased Awareness and Engagement in Holistic Ministry:** Participants will leave the program with a renewed sense of vocation, understanding the interconnectedness of spiritual, mental, and emotional health in fostering whole-person education.
- ▶ **Practical Knowledge and Experiential Insights:** Through case studies, expert sessions, and guided experiential activities, participants will gain hands-on knowledge and tools to lead transformative initiatives in their respective campus communities.

The AACM 2025– Hong Kong is an opportunity to inspire and equip campus ministers to be agents of transformation, responding to the growing needs of their students and institutions. Through a well-rounded program of learning, reflection, and action, the initiative seeks to create ripple effects across campuses in Asia, fostering a culture of care that transcends borders.



Programme Schedule

April 30, 2025 (Wednesday)

15:00	Arrival and Check-in	Royal Plaza Hotel
	Meet up at Hotel Lobby	Royal Plaza Hotel
18:00	Welcome Dinner Greeting: Dr. Albert CHAU (Vice-President Teaching and Learning, HKBU) Mr. Ricky CHENG (Executive Vice President, United Board)	Royal Plaza Hotel
20:00	Return to Hotel	

May 1, 2025 (Thursday)

	Breakfast at Hotel	
08:45	Meet up at Hotel Lobby	Royal Plaza Hotel
	Opening Ceremony Invocation: Prof. KWOK Wai Luen Andrew Welcome: Prof. Alexander WAI (President and Vice-Chancellor, HKBU) Mr. Ricky CHENG (Executive Vice President, United Board) Introduction of AACM Programme: Dr. Maher Spurgeon Music Performance: HKBU Christian Choir Introduction of Host Institution: Ms. Yvonne LEE	Council Chamber, HKBU
	Refreshment	
	Expectation Setting	
	Introduction of HKBU Student Service Speaker: Ms. Wendy CHEUNG, Ms. Manif WONG	Council Chamber
	Lunch	
	HKBU Campus Tour	HKBU Campus
	Reflection Group with Refreshment	
	Vocation and Calling Speaker: Rev. Kristen Glass Perez	Council Chamber
17:30	Return to Hotel Dinner on your own	

May 2, 2025 (Friday)

	Breakfast at Hotel	
08:45	Meet up at Hotel Lobby	Royal Plaza Hotel
	Devotion	
	Keynote Speaker Sharing Keynote Speaker: Dr. PAN Yi Jung Annie	Council Chamber, HKBU
	Refreshment	
	Local Seminaries Chaplaincy Roundtable Speaker: Dr. PAN Yi Jung Annie, Ms. Vicky SHIU, Prof. Aylwin LEUNG, Rev. LAM Kwok Bun Moderator: Ms. Joey SHUM	Council Chamber
	Lunch	
	Breakout Session for Group Discussion	Council Chamber, SWT 504, SWT 505
	Refreshment	
	Group Presentation on Discussion	
	Local Universities Campus Ministry Sharing Speaker: Mr. Walter LAM, Rev. Samuel NG, Dr. Veggy CHOI	Council Chamber
	Reflection Group	
17:30	Return to Hotel Dinner on your own	

May 3, 2025 (Saturday)

	Breakfast at Hotel	
08:45	Meet up at Hotel Lobby	Royal Plaza Hotel
	Devotion	
	"Wellness & Peacebuilding" Exemplar Sharing - Part 1 Speaker: Prof. KWOK Wai Luen Andrew, Prof. Martin CHUNG	Council Chamber
	Refreshment	
	"Wellness & Peacebuilding" Exemplar Sharing -Part 2 Speaker: Dr. WONG King Lai Chris, Mr. Tong KONG	Council Chamber
	Lunch	
	Drama Therapy Experiential Activity Instructor: Ms. Dorothy WONG	The YARD, San Po Kong
	Reflection Group with Refreshment	
17:00	Return to Hotel Dinner on your own	



May 4, 2025 (Sunday)

	Breakfast at Hotel	
08:30	Mass / Worship Service (Optional) St. Teresa's Church, Mong Kok – Catholic St. Andrews Church, Tsim Sha Tsui – Anglican	
	Free Time: Enjoy the energetic Hong Kong city. Lunch and dinner on your own.	

May 5, 2025 (Monday)

	Breakfast at Hotel	
08:45	Meet up at Hotel Lobby	Royal Plaza Hotel
	Contemplative Art Devotion Experience Instructor: Pastor Clarissa LEUNG, Ms. Cheryl CHOW	Lutheran Theological Seminary
	Lunch	
	City Cultural Activities at M+ and Hong Kong Palace Museum	West Kowloon Cultural District
	Ferry Trip at Victoria Harbour with Dinner	Central Pier
21:00	Return to Hotel	

May 6, 2025 (Tuesday)

	Breakfast at Hotel	
08:45	Meet up at Hotel Lobby	Royal Plaza Hotel
	Devotion	University Chapel, HKBU
	Mentoring for Young Adult Seminar Speaker: Dr. CHOI Fai Ming Jonathan	
	Refreshment	
	Group Discussion	University Chapel
	Sharing on the discussion	
	Lunch	
	Preparation for Group Presentation	
	Group Presentation on Action Plan	University Chapel
	Refreshment	
	Closing Ceremony Officiating Guests: Prof. Martin WONG (Provost, HKBU) Mr. Ricky CHENG (Executive Vice President, United Board)	University Chapel
	Closing Dinner	
20:30	Return to Hotel	

May 7, 2025 (Wednesday)

	Breakfast at Hotel	Royal Plaza Hotel
By 11:00	Check out. Have a safe trip home.	



Speakers and Guests (In sequence of event programmes)

Ms. Yvonne Lee

Director, International Office

Hong Kong Baptist University



As Director of International Office (2018-now), Ms. Yvonne Lee plays a leadership role in formulating and implementing the policies and strategies for the advancement of HKBU's internationalization, and the expansion of global education and mobility. Through the establishment of strategic alliances and the cultivation of top-notch institutional partnerships including government and industry stakeholders, Yvonne directs the global education initiatives and forges a wide range of academic collaborations. Additionally, she also helps to cultivate a culturally diverse and inclusive campus environment and promote interest and involvement in the internationalization of HKBU amongst all members of the University community.

Yvonne graduated from the University of Hong Kong and has since gained rich and diverse strategic planning and management experiences in higher education, government and private sectors. She is a seasoned leader with expertise in global partnerships, business development, business innovation, and global branding. Prior to joining HKBU, Yvonne was the Founding Head of Global Engagement at the Hong Kong University of Science and Technology.

Ms. Wendy Cheung

Deputy Director of Student Affairs

Head of the Counselling Centre, Office of Student Affairs

Hong Kong Baptist University



At Hong Kong Baptist University, Wendy Cheung has dedicated 25 years to student well-being. Beginning her career in 1994 as an Executive Officer and Guidance Officer, she provided guidance and coaching to student leaders and peer counsellors for nine years. Since 2003, she has focused on counselling, training and education in mental health and psychological competence, including teaching General Education courses and leading student groups in delivering psychological services both on campus and in Mainland China.

In 2015, Wendy transitioned to an administrative role, becoming Assistant Director and is currently Deputy Director of Student Affairs/Head of the Counselling Centre. She provides leadership to the Counselling Team, Unit for Students with SEN, Student Wellness Unit, and Mainland Student Services Unit. Wendy is a Certified Counsellor and a Certified Mental Health First Aid Instructor with the Mental Health Association of Hong Kong. She is also a Certified Clifton Strengths Coach, an MBTI Certified Practitioner, and a PEERS Certified Provider affiliated with the UCLA PEERS Clinic.

Rev. Kristen Glass Perez

University Chaplain

Center for Interfaith and Spiritual Life

The George Washington University



Rev. Kristen Glass Perez is an established college and university chaplain who currently serves as University Chaplain at The George Washington University in Washington, D.C. In that role, she leads the development and launch of the Center for Interfaith & Spiritual Life at GW. Previously, she served as chaplain at multiple institutions including Northwestern University, Muhlenberg College, and Augustana College. Her direct experience is building and leading multireligious teams of chaplains and staff who work alongside students. At Northwestern University, she established the first Hindu Chaplaincy for the university along with a revision of all university ceremonies to be inclusive of multiple religious, spiritual and secular identities and traditions. Before working in college chaplaincy, Kristen was the founding director for Young Adult Ministry for the Evangelical Lutheran Church in America, the denomination in which she is also an ordained pastor, and a development editor for Augsburg Fortress Publishers. Kristen is a frequent keynote speaker, workshop leader, and author on themes related to college student success and economic hardship, vocation in the undergraduate experience, interreligious engagement, and young adult ministry.

Dr. Pan Yi Jung

Lam Ko Kit Associate Professor (Practical Study)

China Graduate School of Theology, Hong Kong



Dr Annie Pan Yi Jung is Associate Professor of Practical Studies at the China Graduate School of Theology in Hong Kong, where she received her MDiv and MCE. She later studied Pastoral Theology and Christian Spirituality at the Catholic University of Leuven, where she obtained her two Master's degrees and her PhD. She teaches various courses on Christian Spirituality, Pastoral Theology and Practical Theology and supervises the research of PhD, DMin and ThM students. Since 2015 she has been on the editorial board of *Spiritus: A Journal of Christian Spirituality*, and has served on the International Relations Committee of the Society for the Study of Christian Spirituality. She has also been invited to become a member of the International Academy of Practical Theology in 2021. Last year she joined the advisory board of the *Journal of Asian Theological Education & Spiritual Formation* and the Research Oversight Committee of the Asia Theological Association Spiritual Formation. She is the author of six books in Chinese.



Ms. Shiu Sin Man, Vicky

Associate Chaplain and Practical Education Coordinator

Divinity School of Chung Chi College

The Chinese University of Hong Kong



Vicky Shiu is deeply committed to promoting the spiritual, emotional, and holistic growth of theology students through pastoral care, spiritual formation, community development within the divinity school, ecumenical engagement, and coordinating fieldwork to help students connect their vocation or personality traits with putting theory into praxis for reflection. Vicky's work is rooted in her extensive experience in healthcare, counseling, spiritual guidance, and education.

With a professional background as a palliative care nurse specialist, Vicky dedicated over a decade to supporting terminal cancer patients and their families, focusing particularly on their spiritual care. She holds a Bachelor of Nursing from the University of Hong Kong, a Master of Social Science in Counselling from the University of South Australia, and a Master of Divinity from Chung Chi College. Additionally, she is a supervisor-in-training in Clinical Pastoral Education. Vicky is also certified as an NLP trainer, MBTI® practitioner, and Focusing Therapy Trainer, integrating these skills into her work to enhance spiritual care, bio-spirituality, life-and-death education, self-care, and practical reflection for theological students and caregivers.

Vicky is passionate about advancing mental health, spiritual formation, and holistic well-being within campus communities. She works collaboratively with students and faculty to create a nurturing and empowering environment that supports personal and spiritual growth while equipping students with the practical tools needed to integrate their faith into action.

Prof. Leung Chin Pang, Aylwin

Dean

Bethel Bible Seminary, Hong Kong



Dr. Aylwin CP Leung is a Professor of Pastoral Counseling and the Dean of Bethel Bible Seminary, Hong Kong. He obtained his undergraduate degree in Science and graduate degree in EMBA from the Chinese University of Hong Kong. Dr. Leung also received his Master of Christian Marriage and Family Therapy from Bethel Bible Seminary and Doctor of Philosophy in Clinical Psychology from Fuller Theological Seminary, USA.

As a Christian Clinical Psychologist with a strong commitment to human flourishing, Dr. Leung emphasizes a holistic orientation in the formative and transformative experiences of learning and growth. Beside the pedagogical activities, Dr. Leung has extensive interests and experiences of research in marriage and family, the role of spirituality in personal and holistic growth, and the integration of spiritual and psychological interventions in therapy.

Rev. Lam Kwok Bun Brian

Former Chaplain

Hong Kong Baptist Theological Seminary

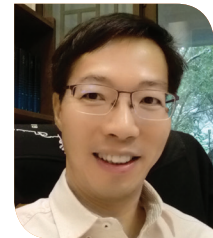


Rev. Brian KB Lam graduated from the China Graduate School of Theology with a M. Div degree in 1994. After being a pastor in two local churches for 12 years, he then served in the Hong Kong Baptist Theology Seminary as chaplain, director of field education, and lecturer for 17 years before he retired in 2024. Now he is a visiting lecturer in the Seminary.

Mr. Walter Lam

Assistant Chaplain

Chung Chi College, The Chinese University of Hong Kong



Mr. Walter Lam is the Assistant Chaplain at Chung Chi College, The Chinese University of Hong Kong, a position he has held since 2005. He holds a Master of Theology with a specialization in Family and Marriage Therapy, as well as a Graduate Diploma in Marriage and Family Therapy Studies. Additionally, Mr. Lam earned a Master of Divinity and a Bachelor of Social Science in Psychology. His extensive academic background and practical experience enable him to provide invaluable support and guidance in the areas of mental health and relational well-being within the campus community.

Pastor Samuel Ng

Campus Minister

Lingnan University



With nearly two decades of experience, Pastor Sam, affectionately known as "Uncle Sam," has embraced a variety of roles, including pastor, university chaplain, sports chaplain, and counsellor. His journey has involved both voluntary and paid positions, supporting university students, young professionals, and families. Sam completed his master's degree in counselling at HKBU and gained valuable experience as a counsellor at the HKBU Social Work Practice and Mental Health Centre. He is currently serving as a counsellor in Restore Ministry, which operates under the Chaplain's Office at Lingnan University. Uncle Sam's mission is to provide guidance and unwavering support, empowering students to thrive and succeed in all areas of their lives.

**Prof. Kwok Wai Luen Andrew**

Associate Vice-President (Curriculum and Pedagogies)

Hong Kong Baptist University



Kwok, Wai-Luen is Associate Vice President (Curriculum and Pedagogies), Director of General Education, and Professor of the Department of Religion and Philosophy at Hong Kong Baptist University. He received his PhD in Theology from King's College London and was a Langham Scholar during his studies. He served as the President of the Society for the Study of the History of Christianity in China from 2018 to 2019. He has edited and authored 7 books, and published more than 33 journal articles on Chinese Christianity and Public Theology. He has been interviewed by the Yale Center for Faith and Culture and Christianity Today on Christian social participation in Hong Kong. He organised rounds of police-student dialogue after the Umbrella Movement in 2014. Since 2020, he has initiated the Cultivating Peace program, which aims at promoting peacebuilding and empowerment in the society. Through school and communal activities, and internet platforms, "Cultivating Peace" promotes four dimensions of peacebuilding: inner peace, interpersonal peace, communal peace and social peace.

Prof. Martin Chung

Associate Professor

Academy of Geography, Sociology and International Studies

Hong Kong Baptist University



Martin Chung is an Associate Professor of Government and International Studies and Programme Coordinator of BA/BSSC Broad-based Admission at Hong Kong Baptist University (HKBU). His first monograph, *Repentance for the Holocaust: Lessons from Jewish Thought for Confronting the German Past* (Cornell University Press 2017) explores the role of religious ideas in German *Vergangenheitsbewältigung* (coming to terms with the past). His comparative study, "Twenty Years after: Statute of Limitations and the Asymmetric Burdens of Justice in Northern Ireland and Post-war Germany" (2021), has been selected by the Hansard Society to be included in the Parliamentary Affairs special collection, "Marking 25 years since the signing of the Good Friday Agreement". Chung is the principal investigator of two projects funded by Hong Kong's Research Grants Council: "Reconciliation and Its Resentments: The Suppression of Justice and Truth Recovery in Germany, Northern Ireland, and Western Balkans" (GRF12614422, 2023-2026), and "The Politics of Antagonism Revisited: Assessing Northern Ireland's Good Friday Agreement (1998-2018)" (ECS22612318, 2018-2022). At HKBU, he teaches "Religion and Politics", and "Sustainable Peace: Conflict Resolution and Reconciliation of Divided Communities", among other subjects. Chung is the recipient of the General Education Teaching Award (Individual) 2021/22.

Dr. Wong King Lai, Chris

Senior Lecturer

Academy of Wellness and Human Development

Hong Kong Baptist University



Dr. Wong King Lai, Chris is a registered social worker with 20 years of professional experience, specializing in teaching and researching community development, macro social work theories and practices, management in non-profit organizations, and narrative practice. Chris has served as the Programme Director for the Master of Social Sciences in Social Work. Since the 2024/25 academic year, he has been the College Fellow of Village CARE (Creative Arena for Residential Education), which aims to provide the best learning experience for students in a residential setting by delivering transdisciplinary academic excellence within a caring, creative, and global culture. Additionally, Chris has been a co-investigator for the knowledge transfer project "Cultivating Peace," which seeks to integrate community development and narrative practice into local Christian communities to support peacebuilding efforts.

Beyond his work at the University, Chris is the chairman of the Deacon Board of Fanling Assembly of God and a member of the board of directors for the well-known social enterprise "Sharing Kitchen Hong Kong," which aims to promote alternative living for grassroots families.

Mr. Tony Kong

Senior Research Assistant

Academy of Chinese, History, Religion and Philosophy

Hong Kong Baptist University



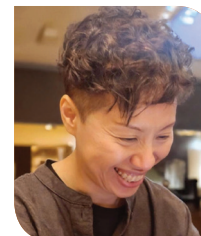
Tony has joined the Cultivating Peace Project in Hong Kong Baptist University since 2021. As a social worker, his work focused on group work and community work. By creating programmes based on Narrative Therapy, they allow participants from secondary schools and churches to review their stories and reflect upon it; providing sessions where genuine and empathetic listening could occur and bridging them between the community and the group through voluntary work and field visits.



Ms. Dorothy Wong

Founder

Dream of Tomorrow



Dorothy Wong completed her studies at the Religion and Philosophy Department of HKBU. Later on, she obtained her Master's degree in Counselling from the University of South Australia. Subsequently, she was awarded a Chevening Scholarship and studied for an MA in Drama and Movement Therapy at The Royal Central School of Speech and Drama, University of London. She is an arts therapist (drama) registered with the UK's state body (HCPC). Dorothy Wong has over 20 years of diverse experience in arts and cultural initiatives, community engagement, youth development, drama therapy, and creative projects. She has developed many cultural projects worldwide. Since launching her company Dream of Tomorrow in 2018, numerous educational programmes, multimedia installation, and arts and cultural events have been organized. Dorothy believes that a new culture emerges from a small group of individuals who possess the bravery to Dream, Observe, and Think (DOT). Lately, Dorothy has also participated in the creative process to craft drama scripts and produce artwork to more effectively realize her artistic concepts. She is dedicated to developing methods for arts engagement and encouraging collaboration among artists, with an emphasis on nurturing the DOT-Colab community.

Pastor Leung Chuk Kwan, Clarissa



Clarissa Leung Chuk Kwan, has been serving as Church Minister in Evangelical Free Church of China, Ling Chuen Church for nearly 30 years, holding Master of Divinity (Evangelical Seminary). Experienced in leading retreats and prayer workshops for churches, cell groups, Christian organizations. Serve as a spiritual director for 15 years, holding Master of Art in Christian Spirituality & Graduate Certificate in Spiritual Direction (Creighton University). Holding a Diploma in Basic of Pastel-Nagomi-Art & Associated Instructive Art Course. Lead drawing meditation workshops for Christian Communications Ltd. (Hong Kong).



Ms. Cheryl Chow

Cheryl Chow studied Fine Arts at CUHK and Expressive Arts therapy (The European Graduate School). Interweaved her practice on Expressive Arts and spirituality with Labyrinth design, museum family program design, arts and spirituality workshop. President of Hong Kong St. Luke's Guild of Catholic Artists.



Dr. Choi Fai Ming, Jonathan

Co-President

Youth Global Network

Dr. Choi's clinical expertise is on adolescent psychotherapy, and research on the challenges and ways out of adolescent addiction, trauma recovery, and suicide prevention. Since 2008, Dr. Choi has been mainly responsible for the post-disaster psychological rehabilitation and reconstruction work in Sichuan, and cultivated young people affected by the disaster to rebuild their lives, transform suffering to become servant leaders.

Dr. Choi is now committed to bringing together and training young people and youth workers from diverse cultural backgrounds. In 2015, a community sharing platform and training center for young people was established in Kam Tin, a city rich in cultural history and ethnicities. In 2017, Dr. Choi established Alternative café and professional coffee school, a social enterprise in Hong Kong. The mission is to explore alternative pathways for underprivileged youth through professional qualifications and character building.

Hong Kong Baptist University



Hong Kong Baptist College was founded by the Baptist Convention of Hong Kong in 1956 as a post-secondary college committed to the provision of a whole person education. In 1983, it became a fully-funded public tertiary institution, and the College gained university status just over a decade later. It was renamed Hong Kong Baptist University (HKBU) in 1994.

HKBU is committed to academic excellence in teaching, research and service, and to the development of the whole person in all these endeavours built upon the heritage of Christian higher education. The University aims to nurture future-shaping students through a broad-based, transdisciplinary and creativity-inspiring education, while embracing technology and fostering sustainability.

Its seven faculties/schools offer a wide array of programmes across a diverse range of disciplines, from the arts, business, communication, and social sciences to science and technology, Chinese medicine and sport. With its fundamental strengths in the arts and humanities, HKBU offers an education and research environment that fosters technological progress with a focus on the human dimensions. At the same time, the University is using technology to push the envelope of human imagination in the arts and cultural sphere. Coupled with our unceasing efforts to achieve breakthroughs in science and Chinese medicine, HKBU strives to contribute to the building of a better world and a more compassionate society.

Chaplain's Office



In 1956, Hong Kong Baptist University was founded by the Hong Kong Baptist Convention as a tertiary institute aiming to provide holistic Christian education. For years, Chaplain's Office has been shepherding the university community, playing an important role in caring for students and staff and upholding Christian values and traditions.

Chaplain's Office accommodates the whole person education in Hong Kong Baptist University, and strives to cultivate outstanding leaders, and to assist students in their personal and spiritual growth and pursuit of life goals. The mission is:

- ♦ To provide pastoral care and counselling services for the University community at large;
- ♦ To serve as a facilitator in providing opportunities for the University community to gain a better understanding and appreciation of Christianity and to develop and grow in personal faith;
- ♦ To cultivate, encourage, foster and nurture a caring community spirit within the University;
- ♦ To assist in preserving and promoting the Christian heritage, tradition and atmosphere within this institution of higher learning.

CAMPUS MAP 校園地圖

HO SIN HANG CAMPUS (HSHC) 善衡校園

- | | |
|--------------------|--|
| 1 音樂室 | Music Rehearsal Hall |
| 2 區樹洪平台花園 | Au Shue Hung Terrace Garden |
| 3 區樹洪樓* | Au Shue Hung Building (ASH)* |
| 4 星島樓* | Sing Tao Building (STB)* |
| 5 大學會堂 / 呂明才中心 | Academic Community Hall (ACH) / Lui Ming Choi Centre (LMC) |
| 6 基督教教育中心 | Christian Education Centre (CEC) |
| 7 溫仁才大樓 (西翼) | Oen Hall Building (West Wing) (OEW) |
| 8 溫仁才大樓 (主樓) | Oen Hall Building (Main Building) (OEM) |
| 9 溫仁才大樓 (東翼) | Oen Hall Building (East Wing) (OEE) |
| 10 查濟民科學大樓 | Cha Chi-ming Science Tower (SCT) |
| 11 邵逸夫大樓 | Sir Run Run Shaw Building (RRS) |
| 12 方樹泉圖書館 / 方樹泉停車場 | Fong Shu Chuen Library (FSC) / Fong Shu Chuen Car Park |
| 楊瑞生紀念館 | Yeung Shui Sang Building (YSS) |
| 14 蒙民偉廣場 (五樓) | William M.W. Mong Courtyard (Level 5) |
| 15 文康學園 | Man Lung Garden |
| 16 偉衡體育中心 | Wai Hang Sports Centre (WHS) |
| 17 紹邦樓 | Shiu Pong Hall (SPH) |
| 18 建新中心 | Franki Centre (FRC) |

*A common room code AST is adopted to all the rooms in these two buildings
此兩座大樓的房間編號英文字母均為AST

SHAW CAMPUS (SHAW) 逸夫校園

- | | |
|-----------------|--|
| 19 逸夫行政樓 | Shaw Tower (SWT) |
| 20 區樹洪紀念圖書館 | Au Shue Hung Memorial Library (AML) |
| 21 永隆銀行商學大樓 | The Wing Lung Bank Building for Business Studies (WLB) |
| 22 林護國際會議中心 | Lam Woo International Conference Centre |
| 23 思賢樓 | David C. Lam Building (DLB) |
| 24 郭鐘真女士 康體文娛中心 | Madam Kwok Chung Bo Fun Sports and Cultural Centre (SCC) |
| 25 聯校運動中心 | Joint Sports Centre (JSC) |

BAPTIST UNIVERSITY ROAD CAMPUS (BURC) 浸會大學道校園

- | | |
|---------------------------------|---|
| 26 吳多泰博士國際中心 | Dr. Ng Tor Tai International House (NTT) |
| 27 教學及行政大樓 | Academic and Administration Building (AAB) |
| 28 賽馬會師生活動中心 / 陳瑞槐夫人胡尹桂女士持續教育大樓 | Jockey Club Academic Community Centre (ACC) / Madam Chan Wu Wan Kwai School of Continuing Education Tower (SCE) |
| 29 賽馬會中醫藥學院大樓 | Jockey Club School of Chinese Medicine Building (SCM) |
| 30 學生宿舍 | Student Residence Halls (SRH) |
| 31 李兆基傳理視藝樓 / 停車場 | Lee Shau Kee Communication and Visual Arts Building (CVA) / Car Park |

JOCKEY CLUB CAMPUS OF CREATIVITY (JC³)

- | | |
|------------|---|
| 32 賽馬會創意校園 | Jockey Club Campus of Creativity (JC ³) |
|------------|---|

LEGEND 圖例

- | | |
|---------|---------------------------|
| ▶ 行人出入口 | Pedestrian Entrance/ Exit |
| ▶ 車輛出入口 | Vehicular Entrance/ Exit |
| 公共巴士站 | Bus Stop |
| 公共小巴站 | Public Light Bus Stop |
| 港鐵站 | MTR Station |
| P 停車場 | Car Park |



Royal Plaza Hotel

Address: 193 Prince Edward Road West, Kowloon, Hong Kong

Tel: (852) 2928 8822

Facilities:

- ♦ Free in-room Wi-Fi and broadband internet access, USB power point for charging electricity
- ♦ LED TV, Electronic safe, Hairdryer, Tea and coffee maker, Iron and Board (On request), Work desk, Slippers, Electric Kettle, Refrigerator, Clothes rack, Bath/Shower
- ♦ Due to the government ban on single-use plastic products, the hotel will not provide free disposable plastic items such as bottled water, shaving kit and shower cap. Water filters are installed in the room to provide high-quality drinking water.
- ♦ Non-smoking room

Laundry Outlet nearby:

- ▶ Sunshine Laundry
 - ♦ Address: Shop 2, G/F, Yiu Cheong Building, 201A Sai Yee Street, Prince Edward, Kowloon (Business Hours: 0800-2000)
 - ♦ Phone: 3994 9759
 - ♦ Price: HK\$56 for 1-6 pounds, then additional HK\$8 for each pound.

Nearest Venues:

- ▶ St. Teresa's Church (Roman Catholic church)
 - ♦ Address: 258 Prince Edward Road West, Kowloon (10mins walk from hotel)
 - ♦ Weekday Masses: 6:45am (English)
- ▶ MOKO Mall



Nearest Dining Places:

There are a wide range of restaurant choices in MOKO mall. Below are a few for your reference.

- ▶ 敏華冰廳 Men Wah Bing Teng
 - ◆ Location: MOKO MTR/F M39
 - ◆ Menu: Vintage Hong Kong diner
 - ◆ Opening Hour: Mon-Sun 0700-2130
 - ◆ Price: HK\$50-100
- ▶ 芽莊越式料理 Nha Trang Vietnamese Cuisine
 - ◆ Location: MOKO L2 269
 - ◆ Menu: Vietnamese, Vegetarian available
 - ◆ Opening Hour: Mon-Sun 1200-2200
 - ◆ Price: HK\$100-200
- ▶ Terrace in Seaside
 - ◆ Location: MOKO L3 346-347
 - ◆ Menu: Korean and Western
 - ◆ Opening Hour: Mon-Sun 1130-2200
 - ◆ Price: HK\$100-200
- ▶ The Pantry & Chips Republic
 - ◆ Location: MOKO L4 436-438
 - ◆ Menu: Pasta & Burger
 - ◆ Opening Hour: Mon-Fri 1130-2200, Sat-Sun & PH 1030-2200
 - ◆ Price: HK\$100-200
- ▶ Amaroni's New York Italian
 - ◆ Location: MOKO L5 526
 - ◆ Menu: Pizza & Pastas, Vegetarian available
 - ◆ Opening Hour: Mon-Thur 11:30-21:30, Fri 11:30-22:00, Sat 11:00-22:00, Sun 11:00-21:30
 - ◆ Price: HK\$200-400
- ▶ 遇見小麵 Xiao Noodles
 - ◆ Location: MOKO L3 345
 - ◆ Menu: Chinese Sichuan Spicy
 - ◆ Opening Hour: Mon-Sun 11:00-22:00
 - ◆ Price: HK\$50-100



Consent Form

Any photograph and/or video, in which you may appear either individually or in group and whether you are named or otherwise, and any verbal or written quote given by you in the course of the program including any ceremony or event relating thereto may be used by the United Board in its internal and external communications including its publications and website (www.unitedboard.org) and social media platforms without prior notice. If you prefer not to have such a photo or quote used in this manner, please inform us as early as practicable at tcho@unitedboard.org.

United Board for Christian Higher Education in Asia

Hong Kong Office

1/F Chung Chi College
Administration Building
The Chinese University of
Hong Kong
Shatin, New Territories
Hong Kong
Phone: 852.3943.4215

New York Office

475 Riverside Drive, Suite
1221
New York, NY 10115
United States
Phone: 1.212.870.2600
Email: info@unitedboard.org

Chennai Consultancy Office

Riverlands Hostel Building
Women's Christian College
51, College Road
Nungampakam
Chennai – 600 006
India
Phone +91 44 29819718



Hong Kong

The name “Hong Kong” translates to “Fragrant Harbor,” is derived from the region’s historical trade in incense and fragrant wood. Located on the southeast coast of China, Hong Kong is renowned for its vibrant skyline, bustling harbor, and rich cultural blend, reflecting its unique colonial history and its status as a key international financial center.

Hong Kong is a Special Administrative Region (SAR) in China known for its highly urbanized environment and significant economic prowess. It plays a pivotal role in global trade, commerce, and finance, serving as a major gateway to China and the Asia-Pacific region. The city is characterized by its iconic landmarks, such as Victoria Peak, which offers stunning views of the harbor and skyline, and the bustling markets of Mong Kok, showcasing local culture and cuisine.

In recent years, Hong Kong has seen a resurgence in tourism, attracting visitors from around the world. According to statistics, the city welcomed over 65 million tourists in 2019, drawn by its unique attractions, shopping, and culinary experiences. Festivals such as the Chinese New Year and the Mid-Autumn Festival bring locals and tourists together, showcasing traditional performances, markets, and food.

Hong Kong is also known for its safety and efficiency. The local government prioritizes public safety, resulting in low crime rates and a well-organized transportation system. The city’s infrastructure includes one of the world’s most efficient public transport systems, making it easy for residents and visitors to navigate.

Getting around in Hong Kong

1. Public Transportation

From buses and Mass Transit Railways (MTR) to taxis, ferries, minibuses to even trams, Hong Kong is one of the best-connected places in the world. When using public transport, it is crucial to observe local etiquette, such as giving priority seats to those in need, avoid eating and drinking, and keeping noise levels down.

2. Octopus Card

The Octopus Card is a rechargeable contactless card that can be used to pay both for transport in Hong Kong and for many shops and restaurants. The card can then be topped up at MTR stations and convenience stores. However, taxis usually accept payment in cash only.

3. On the street

Use pedestrian crossings and obey traffic signals. Jaywalking is an offense and can result in a fine.

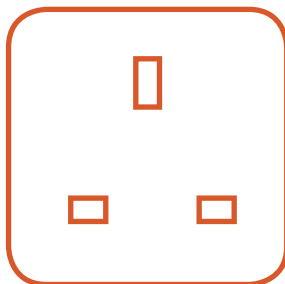
Weather

Hong Kong experiences a subtropical climate, characterized by distinct seasons with varying weather conditions throughout the year. In Spring (March to May), the weather is generally mild and pleasant, with increasing humidity and occasional rain showers. Typhoon season typically runs from May to November. It's important to stay updated on weather forecasts and be aware of any warnings or advisories issued by the Hong Kong Observatory.

The air conditioning can be set at pretty high levels in indoor areas such as in shopping malls, in cinemas and on public transport in Hong Kong. So, don't forget to pack a jacket.

Electricity

Hong Kong uses plug type G, three-pronged UK-style plug. The standard electrical voltage in Hong Kong is 220 volts AC, 50Hz. Most hotel bathrooms also have outlets for 100 volts, but if not, you will need a transformer for any appliance or electrical equipment. Please bring your own adaptor.



Type G Socket

Currency

The official currency of Hong Kong is the Hong Kong Dollar (HKD). The use of credit cards in Hong Kong is widespread - you can pay by card at most restaurants and attractions, except for some smaller shops and places to eat. Having cash on hand is a useful plan B for any time you can't use your preferred card. Most of the restaurants also accept payment by Octopus Card.

ATMs are widely available, and many accept international cards. Withdrawing cash in HKD from an ATM can be convenient but with possible foreign transaction fees. You may also exchange your currency at exchange counters in the city.



Some Useful Tips

1. Waste Disposal

Littering and spitting in public places are strictly prohibited. Offenders can be fined on the spot. Use designated bins for disposing of trash and recycling bins are available for paper, plastic, and metal.

2. Anti-Smoking

Smoking is prohibited in all indoor public places, including restaurants, bars, shopping malls, and public transport facilities. Violators may be fined. There are also designated non-smoking areas in outdoor public places such as parks and beaches.

3. Single-use plastic products

Hotel is banned from providing customers with free disposable plastic items such as bottled water, toothbrush and shower cap. Restaurants are prohibited from providing plastic tableware such as utensils and straws.

4. Respect Local Customs and Lifestyle

Hong Kong is a culturally diverse city with a mix of Eastern and Western influences. Adapting to Hong Kong's fast-paced lifestyle is essential. The locals, renowned for their efficiency, navigate the bustling streets with purpose and speed. To ensure a harmonious experience, it's advisable to be mindful of your pace and spatial awareness.

5. Photography

While photography is generally allowed in public places, be mindful of signs indicating no photography zones, especially in museums, galleries, and certain religious sites. Always ask for permission before taking photos of individuals.

Sightseeing in Hong Kong

- ♦ **Avenue of Stars** (Address: Avenue of Stars, Tsim Sha Tsui)
- ♦ **Ladies' Market** (Address: Tung Choi Street, Mong Kok, Kowloon)
- ♦ **The Peak** (Address: 128 Peak Road, The Peak, Hong Kong)

Emergency Contact

Emergency services (police, fire, ambulance)

999

Hong Kong Baptist University

◆ Dr. Veggy Choi

+852 9196 4436

◆ Ms. Manif Wong

+852 6020 7569

◆ Security Office

+852 3411 7777

United Board for Christian Higher Education in Asia

◆ Ms. Jane Chan

+852 6127 4224

◆ Ms. Praveena Elizabeth D.

+91 99620 17945

